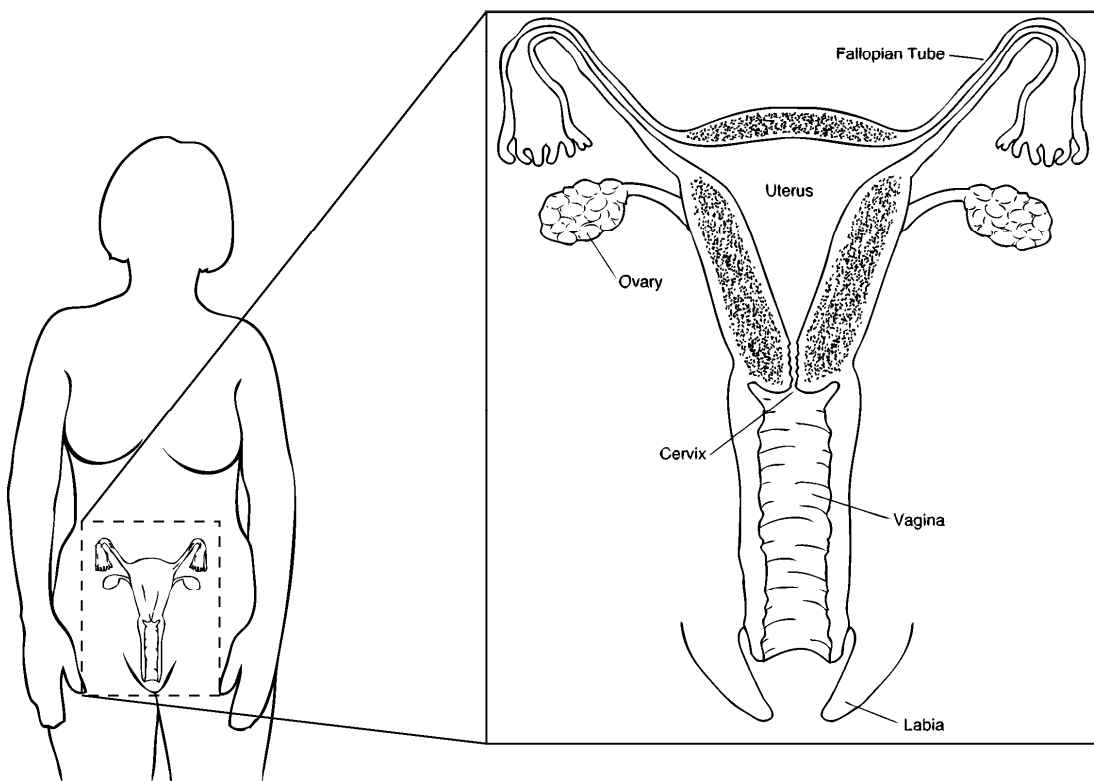


LEEP (Loop Electrosurgical Excision Procedure)

If your pap test was abnormal, you may need LEEP as a treatment. LEEP is used to remove abnormal tissue from the cervix. The cervix is the opening to the uterus or womb.

Arrive on time for your treatment. Plan on being here about 1 hour. The treatment itself takes only a few minutes.



Your Treatment

- You lie on your back and place your feet in stirrups. An instrument, called a speculum, is put into your vagina to keep it open. You may feel some pressure.
- Medicine is used to numb your cervix.
- A solution is put on your cervix to show abnormal cells.
- A magnifying instrument is used to get a close up view of your cervix.

- A thin wire loop is used to remove the abnormal tissue.
- The tissue will be sent to a lab for testing.

Your Care after Treatment

Your cervix should heal completely in a few weeks.

- Rest for the next 2 days.
- You may have some mild cramping.
- You may have some vaginal discharge for a few weeks. This will be like having a period. The discharge may at first look like brownish-black coffee grounds. In time, this will change to clear and watery discharge.
- Do not use tampons or have sexual intercourse for 4 weeks. This reduces your risk of bleeding and allows healing to occur.
- You may take ibuprofen (Advil or Motrin) for pain for the next few days.
- You will have a follow-up visit scheduled with the doctor.

You should have a pap test more often to check for more abnormal tissue. Talk to your doctor about how often you should have this test.

Call your doctor right away if you have:

- Bleeding that soaks a pad in 1 hour
- Severe abdominal cramps or pain
- Chills or fever of 100.4 degrees F or 38 degrees C or higher
- Vaginal discharge that has a bad or foul odor

Talk to your doctor or nurse if you have any questions or concerns.